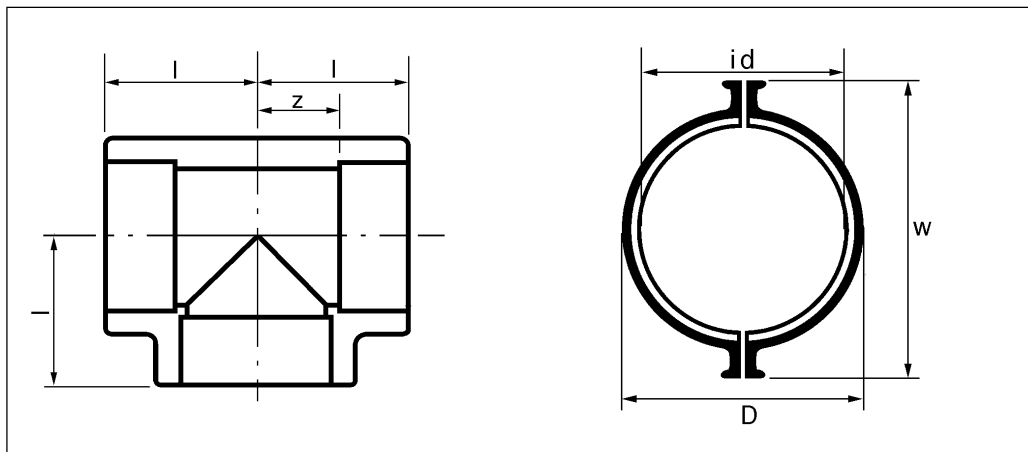




## CONTAIN-IT Dimensions



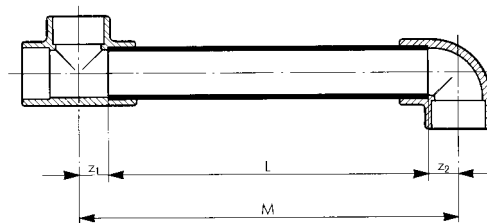
- $z$  = Pipe cutting dimension  
 $l$  = Length  
 $w$  = Width across flange  
 $id$  = Smallest inner diameter  
 $D$  = Largest Outer Diameter  
 All dimensions in mm

sp = Standard Pack

## z - Dimension Method of Assembly

To fabricate pipe assemblies when centre to centre measurements are given, it is necessary to have a simple means of calculating the actual lengths of pipe required. To do this, all that need be known is the measurement from the centre of the fitting to the beginning of the pipe, after it has been inserted the standard distance into the fitting. This is the 'z' dimension and is the key to the whole system.

By subtracting the sum of the 'z' dimensions of the two fittings (one at each end of the pipe) from the centre-to-centre measurement, the length of pipe required can be determined quickly and accurately. The above sketch indicates the simplicity of the dimensioning system. It can be seen clearly from this that the centre-to-centre dimension 'M' when it has had the dimensions  $z_1$  and  $z_2$  subtracted from it, gives the actual cutting length of pipe necessary to produce this assembly.



Key:

- $M$  = distance between the centre of each fitting  
 $L$  = z-dimension of the fitting  
 $z$  = length of pipe to be cut

*The technical data given in this publication are for general information purposes only. They imply no warranty of whatever kind. Please consult our general conditions of supply.*

# CONTAIN-IT®

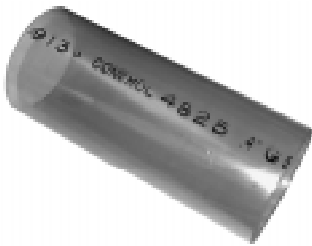
## Secondary Containment Piping System

Material: Clear PVC-U



### Containment Pipe, Split – 10 Foot Lengths(L)

| Inch Size | Code No.   |  | sp  | kg/L  | i.d. | D   |
|-----------|------------|--|-----|-------|------|-----|
| 4         | 8326 040AA |  | 1 L | 6.21  | 90   | 107 |
| 6         | 8326 060AA |  | 1 L | 13.10 | 137  | 160 |



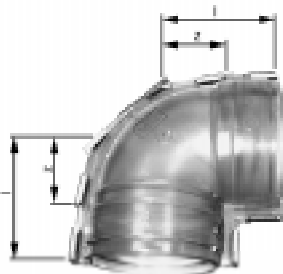
### Containment Pipe, Solid – 20 Foot Lengths (L)

| Inch Size | Code No.   |  | sp  | kg./L | i.d. | D   |
|-----------|------------|--|-----|-------|------|-----|
| 4         | 8326 040AB |  | 1 L | 11.16 | 99   | 107 |
| 6         | 8326 060AB |  | 1 L | 23.22 | 147  | 160 |



### Tee (Socket) – Split Containment

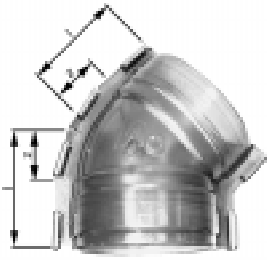
| Inch Size | Code No. |  | sp | kg.  | z  |  | l   |  | w   | i.d. | D   |
|-----------|----------|--|----|------|----|--|-----|--|-----|------|-----|
| 4         | 4601 040 |  | 5  | 0.63 | 60 |  | 111 |  | 146 | 101  | 119 |
| 6         | 4601 060 |  | 5  | 1.51 | 89 |  | 158 |  | 206 | 152  | 175 |



### 90° Elbow (Socket) – Split Containment

| Inch Size | Code No. |  | sp | kg.  | z  |  | l   |  | w   | i.d. | D   |
|-----------|----------|--|----|------|----|--|-----|--|-----|------|-----|
| 4         | 4606 040 |  | 5  | 0.46 | 60 |  | 111 |  | 146 | 101  | 119 |
| 6         | 4606 060 |  | 5  | 1.25 | 89 |  | 158 |  | 206 | 152  | 175 |

## 45° Elbow(Socket) – Split Containment



| Inch Size | Code No. |  | sp | kg.  | z  |  | l   |  | w   | id  | D   |
|-----------|----------|--|----|------|----|--|-----|--|-----|-----|-----|
| 4         | 4617 040 |  | 5  | 0.37 | 22 |  | 73  |  | 146 | 101 | 119 |
| 6         | 4617 060 |  | 5  | 0.95 | 62 |  | 110 |  | 206 | 152 | 175 |



## Standard Coupling (Socket) – Split Containment

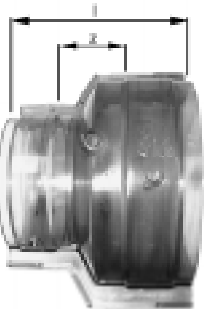
| Inch Size | Code No. |  | sp | kg.  | z  |  | l   |  | w   | id  | D   |
|-----------|----------|--|----|------|----|--|-----|--|-----|-----|-----|
| 4         | 4629 040 |  | 5  | 0.31 | 10 |  | 111 |  | 146 | 101 | 119 |
| 6         | 4629 060 |  | 5  | 0.66 | 10 |  | 148 |  | 206 | 152 | 175 |



## Extended Coupling (Socket) – Split Containment

| Inch size | Code No.  |  | sp | kg.  | z max | z min | l   |  | w   | id  | D   |
|-----------|-----------|--|----|------|-------|-------|-----|--|-----|-----|-----|
| 4         | 4629 040E |  | 5  | 0.61 | 144   | 0     | 254 |  | 144 | 106 | 117 |
| 6         | 4629 060E |  | 5  | 1.32 | 143   | 0     | 291 |  | 203 | 159 | 173 |

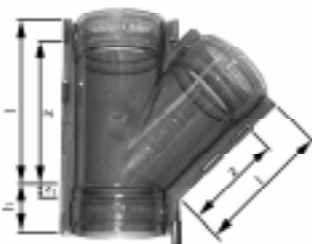
Note: Can also be used for repair



## Reducing Coupling (Socket) – Split Containment

| Inch Size | Code No. |  | sp | kg.  | z  |  | l   |  | w           | id          | D           |
|-----------|----------|--|----|------|----|--|-----|--|-------------|-------------|-------------|
| 6 x 4     | 4629 532 |  | 5  | 0.61 | 29 |  | 148 |  | 206x<br>146 | 152x<br>101 | 175x<br>119 |

Note: Only for jointing 6" to 4" containment pipe



## 45° Tee (Socket) – Split Containment

| Inch Size | Code No. |  | sp | kg.  | z   | z <sub>1</sub> | l   | l <sub>1</sub> | w   | id  | D   |
|-----------|----------|--|----|------|-----|----------------|-----|----------------|-----|-----|-----|
| 4         | 4683 040 |  | 5  | 0.84 | 156 | 24             | 207 | 75             | 146 | 101 | 119 |
| 6         | 4683 060 |  | 5  | 2.03 | 215 | 34             | 283 | 102            | 206 | 152 | 175 |

Note: Maximum test pressure 2.6bar



## Cap (Socket) – One Piece Containment (for solvent cementing)

| Inch Size | Code No. |  | sp | kg.  | z  |  | l   |  |  | i.d. | D   |
|-----------|----------|--|----|------|----|--|-----|--|--|------|-----|
| 4         | 4647 040 |  | 5  | 0.20 | 45 |  | 50  |  |  | 107  | 115 |
| 6         | 4647 060 |  | 5  | 0.46 | 95 |  | 128 |  |  | 168  | 188 |

Note: 4" will only fit 4" containment pipe. 6" will fit standard inch pipe, to fit 6" containment pipe adaptor sleeve 4687060 is required



## Adaptor Socket x Threaded Adaptor – One Piece Containment

| Inch Size | Code No. |  | sp | kg.  | z  |  | l   |  |  | i.d. | D   |
|-----------|----------|--|----|------|----|--|-----|--|--|------|-----|
| 4         | 4635 040 |  | 5  | 0.49 | 44 |  | 80  |  |  | 107  | 115 |
| 6         | 4635 060 |  | 5  | 0.83 | 76 |  | 128 |  |  | 168  | 187 |

Note: 4" will only fit 4" containment pipe. 6" includes Adaptor sleeve 4687060 to fit 6" containment pipe, without adaptor it will fit standard inch pipe



## Adapter Sleeve – One Piece Containment

| Inch Size | Code No. |  | sp | kg   |  |  | l  |  |  | i.d. |  |
|-----------|----------|--|----|------|--|--|----|--|--|------|--|
| 4         | 4687 040 |  | 10 | 0.09 |  |  | 51 |  |  | 101  |  |
| 6         | 4687 060 |  | 10 | 0.26 |  |  | 84 |  |  | 148  |  |

Note: For adapting standard inch size fittings sockets to containment pipe



## Plug (Threaded)

| Inch Size | Code No. |  | sp | kg.  |  |  | l  |  |  |  | D   |
|-----------|----------|--|----|------|--|--|----|--|--|--|-----|
| 4         | 4650 040 |  | 5  | 0.15 |  |  | 48 |  |  |  | 114 |
| 6         | 4650 060 |  | 5  | 0.35 |  |  | 51 |  |  |  | 165 |

Note: For use with Adaptor socket 4635040/4635060



## Inch Centralizer – (for inch size inner pipe)

| Inch Size      | Code No. |  | sp | kg.  |  |  |  |  |  |  |  |
|----------------|----------|--|----|------|--|--|--|--|--|--|--|
| 4 x 1/2        | 4686 415 |  | 25 | 0.10 |  |  |  |  |  |  |  |
| 4 x 3/4        | 4686 416 |  | 25 | 0.10 |  |  |  |  |  |  |  |
| 4 x 1          | 4686 417 |  | 25 | 0.10 |  |  |  |  |  |  |  |
| 4 x 1 1/4      | 4686 418 |  | 25 | 0.10 |  |  |  |  |  |  |  |
| 4 x 1 1/2      | 4686 419 |  | 25 | 0.10 |  |  |  |  |  |  |  |
| 4 x 2          | 4686 420 |  | 25 | 0.10 |  |  |  |  |  |  |  |
| 6 x 2 1/2      | 4686 719 |  | 25 | 0.18 |  |  |  |  |  |  |  |
| 6 x 3          | 4686 530 |  | 25 | 0.18 |  |  |  |  |  |  |  |
| 6 x 4          | 4686 532 |  | 25 | 0.18 |  |  |  |  |  |  |  |
| * 6 x 1/2 Twin | 4686 811 |  | 25 | —    |  |  |  |  |  |  |  |
| * 6 x 3/4 Twin | 4686 813 |  | 25 | —    |  |  |  |  |  |  |  |
| * 6 x 1 Twin   | 4686 815 |  | 25 | —    |  |  |  |  |  |  |  |

\*Special order only, can only be used on new pipe installations



## Metric Centralizer – (for metric size inner pipe)

| Metric Size     | Code No. |  | sp | kg.  |  |  |  |  |  |  |  |
|-----------------|----------|--|----|------|--|--|--|--|--|--|--|
| 4 x 20mm        | 4686 712 |  | 25 | 0.10 |  |  |  |  |  |  |  |
| 4 x 25mm        | 4686 713 |  | 25 | 0.10 |  |  |  |  |  |  |  |
| 4 x 32mm        | 4686 714 |  | 25 | 0.10 |  |  |  |  |  |  |  |
| 4 x 40mm        | 4686 715 |  | 25 | 0.10 |  |  |  |  |  |  |  |
| 4 x 50mm        | 4686 716 |  | 25 | 0.10 |  |  |  |  |  |  |  |
| 4 x 63mm        | 4686 717 |  | 25 | 0.10 |  |  |  |  |  |  |  |
| 6 x 75mm        | 4686 719 |  | 25 | 0.18 |  |  |  |  |  |  |  |
| 6 x 90mm        | 4686 720 |  | 25 | 0.18 |  |  |  |  |  |  |  |
| 6 x 110mm       | 4686 721 |  | 25 | 0.18 |  |  |  |  |  |  |  |
| * 6 x 20mm Twin | 4686 812 |  | 25 | —    |  |  |  |  |  |  |  |
| * 6 x 25mm Twin | 4686 814 |  | 25 | —    |  |  |  |  |  |  |  |
| * 6 x 32mm Twin | 4686 816 |  | 25 | —    |  |  |  |  |  |  |  |

\*Special order only, can only be used on new pipe installations

## Termination Fitting (Socket) – Split Containment (inch inner pipe)



| Inch Size | Code No. |  | sp | kg.  |
|-----------|----------|--|----|------|
| 4 x 1/2   | 4628 415 |  | 5  | 0.45 |
| 4 x 3/4   | 4628 416 |  | 5  | 0.45 |
| 4 x 1     | 4628 417 |  | 5  | 0.45 |
| 4 x 1 1/4 | 4628 418 |  | 5  | 0.45 |
| 4 x 1 1/2 | 4628 419 |  | 5  | 0.30 |
| 4 x 2     | 4628 420 |  | 5  | 0.30 |
| 6 x 2 1/2 | 4628 528 |  | 5  | 0.70 |
| 6 x 3     | 4628 530 |  | 5  | 0.59 |
| 6 x 4     | 4628 532 |  | 5  | 0.65 |

## Flexible EPDM Termination Fittings c/w SS clamps One Piece Containment



| Inch      | /  | Metric Size | Code No.  |  | sp | kg.  |
|-----------|----|-------------|-----------|--|----|------|
| 4 x 1/2   | or | 20mm        | 4628 402E |  | 1  | 0.45 |
| 4 x 3/4   | or | 25mm        | 4628 403E |  | 1  | 0.45 |
| 4 x 1     | or | 32mm        | 4628 404E |  | 1  | 0.40 |
| 4 x 1 1/4 | or | 40mm        | 4628 405E |  | 1  | 0.40 |
| 4 x 1 1/2 | or | 50mm        | 4628 406E |  | 1  | 0.35 |
| 4 x 2     | or | 63mm        | 4628 407E |  | 1  | 0.30 |
| 6 x 2 1/2 | or | 75mm        | 4628 408E |  | 1  | 0.90 |
| 6 x 3     | or | 90mm        | 4628 409E |  | 1  | 0.80 |
| 6 x 4     | or | 110mm       | 4628 410E |  | 1  | 0.70 |

## Flexible EPDM Termination Fitting c/w Test Fitting & SS clamps One Piece Containment



| Inch Size | /  | Metric Size | Code No.   |  | sp | kg.  |
|-----------|----|-------------|------------|--|----|------|
| 4 x 1/2   | or | 20mm        | 4628 402ET |  | 1  | 0.45 |
| 4 x 3/4   | or | 25mm        | 4628 403ET |  | 1  | 0.45 |
| 4 x 1     | or | 32mm        | 4628 404ET |  | 1  | 0.40 |
| 4 x 1 1/4 | or | 40mm        | 4628 405ET |  | 1  | 0.40 |
| 4 x 1 1/2 | or | 50mm        | 4628 406ET |  | 1  | 0.35 |
| 4 x 2     | or | 63mm        | 4628 407ET |  | 1  | 0.30 |
| 6 x 2 1/2 | or | 75mm        | 4628 408ET |  | 1  | 0.90 |
| 6 x 3     | or | 90mm        | 4628 409ET |  | 1  | 0.80 |
| 6 x 4     | or | 110mm       | 4628 410ET |  | 1  | 0.70 |

## +GF+ CONTAIN-IT® Secondary Containment Piping System Accessories

### Spare Fitting Clip



(all fittings are supplied with the required number of clips for assembly)

| Inch Size | Part Number | sp | kg./pack 25 |
|-----------|-------------|----|-------------|
| 4 & 6     | 4693 101    | 25 | 0.15        |



### Pipe Clamp (for split pipe assembly includes jaws for both 4" and 6" pipe)

| Inch Size | Part Number | sp | kg.  |
|-----------|-------------|----|------|
| 4 & 6     | 4693 102    | 1  | 1.37 |

### Drill Bits (for drilling extra holes in split fittings and for drilling crossover holes)



| Inch Size                         | Part Number | sp | kg.  |
|-----------------------------------|-------------|----|------|
| 4<br>Counterbore/Crossover for 4" | 4693 104    | 5  | .02  |
| 6                                 | 4693 105K   | 5  | 0.07 |

Counterbore & Crossover Kit for 6" teach kit contains one bit for injection holes and one bit for crossover holes)



### Manual Injection Gun – System II

| Part Number | sp | kg.  |
|-------------|----|------|
| 4694 301M   | 1  | 2.20 |

### Adhesive Cartridge\* – System II



| Part Number | sp | kg.  |
|-------------|----|------|
| 4694302     | 12 | 0.75 |

\*limited shelf life product (12 months)

### Mixing Tip – Two-Part Adhesive



| Part Number | sp | kg./Pack 10 |              |
|-------------|----|-------------|--------------|
| 4694303     | 10 | 0.2         | Straight Tip |
| 4694306     | 10 | 0.3         | Flexible     |
| 4694307     | 10 | 0.2         | Bent         |







# George Fischer Sales Limited

## Terms and Conditions of Sale

### 1. Definitions

- 1.1 In these Conditions these words have the following meanings:
- "the Company" George Fischer Sales Limited or such other company within the George Fischer Group of companies as shall be responsible for supplying the Goods and/or Services
- "the Contract" any contract under which the Company sells Goods and/or provides Services to the Customer
- "the Buyer" the individual, firm, company or other party with whom the Company contracts the whole or any part of the goods which the Company is to supply or carry out
- "the Services" the whole or any part of the services which the Company is to supply or carry out
- "supply" includes but is not limited to any supply under a contract for sale
- "International Supply Contract" 1977 such a contract as is described in section 26 (3) of the Unfair Contract Terms Act 1977

1.2 Any reference in these Conditions to any provision of a statute shall be construed as a reference to that provision as amended, re enacted or extended at the relevant time

### 2. Contract Terms, Variations and Representations

- 2.1 No order in pursuance of a quotation or otherwise shall be binding on the Company unless and until such order is accepted by the Company
- 2.2 The Contract will be subject to these Conditions. Except as provided in clause 2.3 no representative or agent of the Company has authority to agree any term or make any representation which is inconsistent with these Conditions or to enter into any contract except on the basis of them
- 2.3 Unless otherwise agreed in writing by the Company no term or representation inconsistent with these Conditions will bind the Company. The words "unless otherwise agreed in writing by the Company" in these Conditions means unless otherwise agreed in writing and signed by a director or Commercial Manager or Deputy Commercial Manager of the Company
- 2.4 Unless otherwise agreed in writing by the Company these Conditions will override any terms or conditions stipulated or referred to by the Buyer in his order or pre contract negotiations
- 2.5 Any illustrations, descriptions or specifications contained in the Company's catalogues, price lists or other advertising material is intended merely to present a general picture of the Goods and/or Services and will not form a representation or be part of the Contract unless otherwise agreed in writing by the Company
- 2.6 Where the Company has not acknowledged the Buyer's order in writing, these conditions will apply to the Contract provided the Buyer has had prior notice of them
- 2.7 The Company reserves the right to correct any clerical or typographical errors made by its employees at any time

### 3. Specification, Instructions and Information

- 3.1 If Goods are made or Services carried out to a specification, instruction or design supplied by the Buyer or any third party on behalf of the Buyer then the suitability and accuracy of that specification, instruction or design will be the Buyer's responsibility; and the Buyer will indemnify the Company against any infringement of any patent, design right, registered design, trademark, trade name, copyright or other intellectual property right and any loss, damage or expense it may incur because of any such infringement or alleged infringement in any country; and the Buyer will indemnify the Company against any loss, damage or expense in respect of any liability arising under the Consumer Protection Act 1987 (or any liability arising under any similar legislation enacted in any country) by reason of the specification or design of the Goods or Services
- 3.2 Where Goods are to be supplied or Services carried out to the Buyer's specification the Company reserves the right to make any changes in the specification of the Goods or Services which do not materially affect the quality or performance of the Goods or Services
- 3.3 The Buyer warrants that it will pass on to all third parties to whom it may supply or who may use the Goods all information as to the use and safe handling of the Goods which has been provided to the Buyer by the Company

### 4. Prices

- 4.1 Unless otherwise agreed in writing by the Company the Company's quotations for the Goods and/or Services are provisional and may be altered at any time for any reason
- 4.2 The prices charged by the Company will be those ruling at the date of despatch of the Goods and/or completion of the Services. The Company accordingly reserves the right to vary the prices from those quoted or from those prevailing at the Contract date in the event of any rise or fall in the cost of materials, labour, services, transport or statutory charges between the Contract date and the date of despatch of the Goods and/or completion of the Services. The Company may also increase its prices to take account of any error or inadequacy in any specification, instruction or design provided by the Buyer or any modification carried out by the Company at the Buyer's request
- 4.3 All prices quoted are exclusive of value added tax. The Buyer shall pay all VAT relating to the Goods and/or Services and any other duties, taxes or other government charges payable in respect of the Goods and/or Services

### 5. Small Orders

The Company makes a minimum charge for small orders according to the type of material required, particulars of which are available from the Company on request. The Company reserves the right to vary from time to time as economic considerations may require its definition of a "small order" and the minimum charge payable for any order falling within such definition without prior notice to the Buyer

### 6. Delivery or Completion of Services

- 6.1 If the Contract is an International Supply Contract it will be deemed to incorporate the latest edition of "Incoterms" current at the date of the Contract. If there is any inconsistency between "Incoterms" and any express term of the Contract the latter will prevail. The Company will be under no obligation to give the Buyer the notice specified in Section 32 (3) of the Sale of Goods Act 1979. Unless otherwise agreed in writing by the Company all Goods and/or Services supplied under an International Supply Contract are supplied ex works
- 6.2 Orders over £500 nett are sent carriage paid to any destination on the Company's normal delivery routes in the United Kingdom mainland and Northern Ireland. Deliveries to other destinations not on the Company's normal United Kingdom and Northern Ireland delivery routes or under the said value may at the Company's discretion be subject to a carriage charge. When the Buyer requests delivery by a specific carrier any difference in cost between the Company's normal method of carriage and that requested will be charged to the Buyer
- 6.3 Any dates quoted are given and intended as an estimate only given in good faith and the Company will not be liable for any failure to deliver or complete by such dates or within such periods. Time for delivery will not be of the essence of the Contract and will also be conditional upon receipt of final instructions for delivery being received promptly
- 6.4 In the event of the performance of any obligation accepted by the Company being prevented, delayed or in any way interfered with by rules, regulations, requisitions or orders of the Government of labour authority, or shortage, strike, accident, fire, shortage of labour or materials or non delivery by the Company's suppliers or damage to or destruction of the whole or part of the Goods or by any other cause beyond the Company's control the Company may at its option suspend performance or cancel its obligations under the Contract without liability for any damage or loss of any kind whatsoever resulting therefrom such suspension or cancellation being without prejudice to the Company's right to recover all sums owing to it in respect of consignments delivered and costs incurred to date
- 6.5 The Company reserves the right to despatch and invoice any part of an order when available or any part of the Services when such part is completed
- 6.6 The Company will try to comply with reasonable requests by the Buyer for postponement of delivery but shall not be obliged to do so. Where delivery is postponed otherwise than due to the Company's default the Buyer shall pay all costs and expenses of delay including a reasonable charge for storage and transportation
- 6.7 Whilst the Company will endeavour to deliver the exact quantity of Goods ordered by the Buyer the Company reserves the right to deliver up to plus or minus 10% of the quantity ordered and the Buyer will be invoiced for the actual quantity of Goods delivered and any agreed total Contract price will be adjusted proportionally

### 7. Payment

- 7.1 Unless otherwise agreed in writing by the Company payment will be made by the Buyer, nett cash, by the end of the month following the month in which the Goods and/or Services are invoiced notwithstanding that the property in the Goods has not passed to the Buyer
- 7.2 Time for payment will be of the essence of the Contract
- 7.3 Without prejudice to any other rights of the Company, interest will be payable on all overdue accounts at 4% above Barclays Bank Plc base rate from time to time. For the purposes of clauses 9 and 12 the full purchase price of the Goods and/or Services will include any interest payable under this clause
- 7.4 Non payment on a due date will entitle the Company to demand payment of all outstanding balances whether due or not and/or cancel all outstanding orders without prejudice to any other rights it may have
- 7.5 Without prejudice to any other rights it may have the Company will have the right to suspend performance of its obligations if it reasonably believes that the Buyer will not make payment in accordance with this clause 7

### 8. Passing of Risk

8.1 Except for International Supply Contracts and unless otherwise agreed in writing by the Company the risk in the Goods shall pass on delivery of the Goods to the Buyer or the Buyer's agent or, if delivery is postponed at the Buyer's request or due to the Buyer's fault, when the Goods are ready for despatch

### 9. Retention of Title

- The following provisions shall apply to all contracts relating to Goods which under the Contract the Company agrees to supply to the Buyer. No termination of the Contract shall prejudice limit or extinguish the Company's rights under this clause
- 9.1 Upon delivery of the Goods the Buyer shall hold the Goods solely as bailee for the Company and set the Goods aside separately identified as being the property of the Company and the Goods

shall remain the property of the Company until such time as the Buyer shall have paid to the Company the full purchase price of all Goods and Services supplied under the Contract or any other contract between the Company and the Buyer. Until such time the Company shall be entitled to recover the Goods or any part thereof and for the purpose of exercising such rights the Company its employees and agents with appropriate transport may enter upon the Buyer's premises and any other location where the Goods are situated

- 9.2 The Buyer is hereby granted a licence by the Company to incorporate the Goods in any other products
- 9.3 The Buyer is hereby licensed to sell on the Goods and any products incorporating any of them. The Buyer shall, immediately upon receipt of the proceeds of sale, and whether or not payment has been made by the Buyer, remit to the Company the full purchase price of the Goods sold on less any part thereof which has already been paid and until such amount has been so remitted shall hold such amount as trustee and agent for the Company
- 9.4 The Buyer shall maintain all appropriate insurance in respect of the Goods from the date or dates on which the risk therein passes to it. In the event of any loss or damage occurring while the Goods remain the property of the Company the Buyer shall immediately on receipt of the insurance monies remit to the Company the full purchase price of the Goods lost or damaged less any part thereof which has already been paid and until such amount has been so remitted shall hold such amount as trustee and agent for the Company
- 9.5 The licences granted under sub clauses 9.2 and 9.3 above shall be terminable forthwith at any time upon notice by the Company to the Buyer
- 9.6 Repossession of Goods shall be without prejudice to any other rights the Company may have against the Buyer and any person in such re possession or any damage caused to any land by the Company in exercise of its powers hereunder shall be borne by the Buyer
- 9.7 The Company or its agents shall be entitled to enter onto the Buyer's premises from time to time for the purpose of ensuring that the Buyer has complied with the provisions of this clause 9 and inspecting all books accounts records documents and papers of the Buyer for the purpose of determining sums due to the Company by virtue of the provisions of sub clause 9.3

### 10. Limitation of Liability

- 10.1 THE PRICES CHARGED FOR THE GOODS AND/OR SERVICES ARE BASED STRICTLY ON THE UNDERSTANDING OF ACCEPTANCE BY THE BUYER OF THE PROVISIONS FOR THE LIMITATION OF THE COMPANY'S LIABILITY SPECIFIED IN THESE CONDITIONS AS CONDITIONS FOR EACH AND EVERY CONTRACT FOR THE SUPPLY OF GOODS AND/OR SERVICES BY THE COMPANY TO THE BUYER
- 10.2 The Buyer will carefully examine the Goods on receipt and notify the Company and the carrier immediately of any damage loss or shortage. No claims for shortage or damage in transit will be entertained unless the Company and the Carriers (where independent carriers are employed) are notified in writing within five days of delivery. Where independent carriers are employed, claims for non delivery will not be entertained unless the Company and the Carriers are notified in writing within 21 days from the date of despatch. The Company's liability, if any, will be limited to replacing (or at its option) repairing such Goods. The Company will have no liability for any consequential loss arising out of such damage loss or shortage
- 10.3 The Company shall be responsible (subject to liability on the part of the Company being established for direct but not indirect damage to property caused by any defect in Goods supplied to the Buyer) Provided That the Company's liability hereunder shall not exceed the sum of £500,000 in total. The Company shall not in any circumstances be liable for any indirect or consequential damage or loss to property caused by or arising from any defect in the Goods
- 10.4 Subject to the foregoing and save as otherwise provided in these Conditions the Company's liability in respect of any defect in or failure of Goods supplied or default in work done (which expression shall, without prejudice to its generality, include all work done in or in connection with the design, manufacture, treatment, testing, erection, installation, repair or servicing of any Goods) is limited to replacing or (at its option) repairing or paying for the repair or replacement of Goods which are found to be defective by reason of faulty or incorrect design, workmanship, parts or materials or default in work done and carrying out again any Services which it has failed to perform properly in accordance with the Contract
- 10.5 The Company's liability for any direct loss or damage sustained by the Buyer has a result of any error in any weight, dimension, capacity, performance or other description or information which has formed a representation or part of the contract will not exceed the price of the Goods and/or Services in respect of which the description or information is incorrect
- 10.6 The Company will only be liable to the Buyer in respect of the matters set out in sub clauses 10.3, 10.4 and 10.5 PROVIDED THAT the Buyer informs the Company of the defect or failure or default as soon as is reasonably practicable and in any event the defect or failure or default is notified to the Company within twelve months of the delivery of the Goods or completion of the Services (as the case may be) and authority is provided for the Company's servants or agents to inspect the same
- 10.7 Save as expressly provided in these Conditions the Company shall have no other or further liability in respect of any direct or consequential loss (whether economic loss or otherwise) or damage sustained by the Buyer arising from or in connection with any such defect, failure, default or error as aforesaid
- 10.8 Where the Company agrees to repair or replace Goods or carry out again any Services any time specified for delivery or performance under the Contract will be extended for such period as the Company may reasonably require
- 10.9 Except for the terms implied in the Contract by section 12 of the Sale of Goods Act 1979 or section 2 of the Supply of Goods and Services Act 1982 all conditions, warranties and other terms express or implied, statutory or otherwise, are expressly excluded save insofar as they are contained in these Conditions or otherwise expressly agreed by the Company in writing. If any legislation makes it unlawful to exclude or purport to exclude any term from the Contract this clause will not apply to such term
- 10.10 Except in respect of death or personal injury and save as hereinafter provided the Company shall not be liable to the Buyer for any damage or for any direct or consequential loss incurred by the Buyer in consequence of any negligence on the part of the Company or negligence or willful default on the part of its servants or agents in or in connection with the supply of any Goods or the carrying out of any work (which expression shall, without prejudice to its generality, include all work done in or in connection with the design, manufacture, testing, erection, installation, repair or servicing of any Goods) or in the preparation of any information or advice
11. **Health and Safety at Work Etc Acts**  
The Buyer must inform the Company of any special requirement which it considers necessary that the Goods being supplied should comply with, otherwise the Buyer assumes responsibility for the Goods being sufficient and suitable for his purpose
12. **Cancellation or Deferment**
- 12.1 The Company may defer any deliveries of Goods or performance of Services or treat the Contract as determined if the Buyer fails to make any payment when it becomes due or enters into any composition or arrangement with its creditors or has a winding up order made against it or has an administrative receiver or administrator appointed or passes a resolution for winding up or a Court makes an order to that effect or if the Buyer breaches any of these conditions. The foregoing is without prejudice to the Company's right to the full purchase price for the Goods and/or Services and damages for any loss suffered in consequence of the determination of the Contract
- 12.2 Orders placed cannot be cancelled except with the Company's consent in writing and on terms which will indemnify the Company against loss
- 12.3 Without prejudice to the provisions of clause 10 of these Conditions Goods returned without the Company's consent will not be accepted for credit. Where Goods are returned with the Company's consent by prior arrangement in writing all costs of carriage shall be paid by the Buyer and a minimum charge of 25% of the invoice value of the Goods will be made to cover handling and expenses, provided always that it shall be the responsibility of the Buyer to return the Goods to the Company in good and saleable condition at the Buyer's risk
13. **Installation and Other Services**
- 13.1 If under the Contract the installation, testing or servicing of the Goods or any other goods is to be carried out by or under the supervision of the Company the Buyer warrants that it will make all necessary preparations to the site by such date as may be specified in the Contract or reasonably required by the Company; and the Buyer further warrants that it will provide suitable access to and possession of the site, suitable protection of the Goods from the time of delivery and all information and facilities required to enable the Company to perform its obligations
- 13.2 The Company shall be responsible (subject to liability on the part of the Company being established for direct but not indirect damage to property caused in the course of installation, testing, servicing or repair by the negligence or the Company or the negligence or willful default of its servants or agents) Provided That the Company's liability hereunder shall not exceed the sum of £500,000 in total
- 13.3 The Company reserves the right to subcontract the installation of the Goods or the performance of any other Services required under the Contract
- 13.4 The Buyer warrants that he will at all times provide a safe environment for the Company's employees, agents or subcontractors and will comply with all statutory or other regulations and codes of practice in connection therewith and will indemnify the Company in respect of any loss incurred by the Company due to the Buyer's breach of such warranty
14. **Testing**
- 14.1 If the Company agrees that any tests shall be carried out in the presence of the Buyer or his representative the Company shall notify the Buyer of the date on which it is or will be ready to carry out such tests and the Buyer undertakes that he or his representative will attend at the premises where the Goods are to be tested on the date specified in the notification. The Company for the purpose of witnessing the tests and agrees that in default of such attendance the Company may proceed with the tests in his absence and he shall be bound by the results thereof
15. **General**
- 15.1 These Conditions and the Contract are governed by English Law and the parties agree to submit to the jurisdiction of the English Courts in the event of any dispute
- 15.2 The headings in these Conditions are inserted for convenience only. They are not to affect their interpretation or construction
- 15.3 If any provision of these Conditions is or becomes illegal or void for any reason, the validity of the remaining provisions shall not be affected
- 15.4 Failure by the Company to enforce strict compliance with these Conditions by the Buyer will not constitute a waiver of any of them

Stockist

**GEORGE FISCHER +GF+**

**George Fischer Sales Limited**

**Paradise Way Coventry CV2 2ST**

**Tel:024 76 535535, Fax:024 76 530450**

**email: [info@georgefischer.co.uk](mailto:info@georgefischer.co.uk)**